

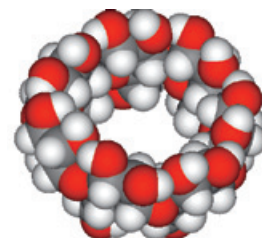
Cyclodextrins

The promise...

Cyclodextrin based therapies are a promising new approach for clinical use.

Though the class of molecules is well-known, recent research has revealed the extensive possibilities that lie in the plethora of pharmacological properties of cyclodextrins and the opportunities they offer as a scaffold for bifunctional drugs.

Meanwhile a series of well-known cyclodextrin-based products has entered the market, such as Vfend® (Pfizer, voriconazole iv solution) and Geodon® (Pfizer, ziparsidone im solution) but also Bridion® (Merck, sugammadex iv) and various ophthalmic drug products.



...and the challenge

With the increase of chemical know-how, developers also have become aware of the implications of the (complex) chemistry for the development of (new) drug products using cyclodextrins.

The complex nature of the chemistry and purification of cyclodextrins requires a thorough understanding of all manufacturing and regulatory consequences.

Our proposal

The biCycle platformTM provides a unique cluster around the GMP synthesis and manufacturing of cyclodextrin-based materials for clinical use with:

- state-of-the-art facilities
- dedicated and experienced staff
- flexible and fully customized range of services, adapted to your specific needs.

Our combined expertise includes chemical and pharmaceutical development, toxicology, clinical development, and registration of cyclodextrin based drugs.

This extensive know-how and our comprehensive range of services can significantly speed up the development of your cyclodextrin-based drug products.

If you like to take advantage from our experience, please get in touch with the biCycle platformTM or one of its partners.



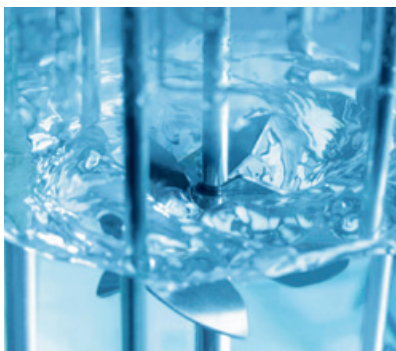
The partners

The partners in the biCycle network, Okklo Life Sciences, BioConnection and ChemConnection each deliver their own expertise and are all located at the Pivot Park Oss, The Netherlands. It is the combination of their expertises which makes biCycle your ideal partner in the challenging field of cyclodextrins.

Okklo Life Sciences

The development partner that can provide you with all your needs for:

- full regulatory support
- development of clinical study protocols
- clinical trial applications
- IMPD writing
- pharmacovigilance and
- project management.



ChemConnection

The chemical partner, building on:

- a wealth of expertise and proven track record in carbohydrate chemistry
- a unique facility comprising a GMP production environment equipped to produce gram to multi kg quantities, and a lab to support route scouting and scale up.
- a broad range of preparative chromatography equipment for chiral or non-chiral separations as well for purification of charged (bio)molecules.

BioConnection

The GMP Manufacturing and CMC services partner, building on:

- a wealth of expertise and proven track record in formulation, analytical and freeze-dry-cycle development
- unsurpassed possibilities for fill&finish including vials, prefilled syringes, blowfill seals and ampoules
- freeze drying capacity from clinical scale up to commercial
- project management of your CMC development and manufacturing project.



www.okklo.com



www.chemconnection.eu



www.bioconnection.eu